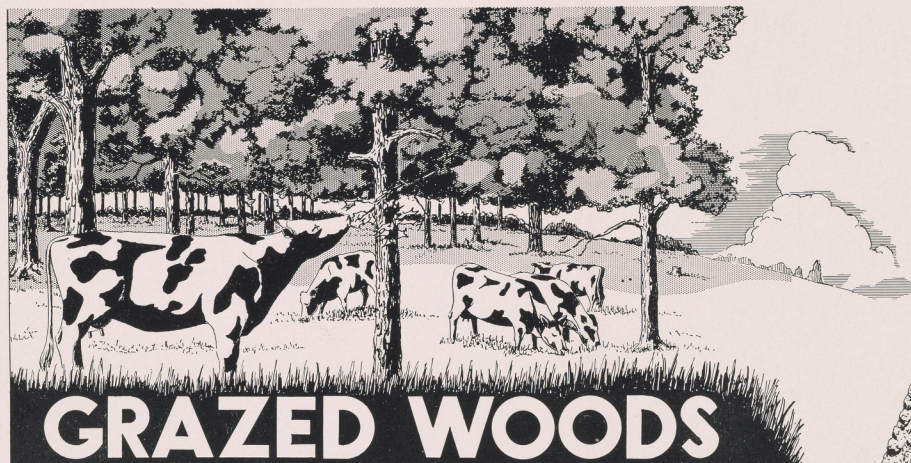


Historic, archived document

Do not assume content reflects current scientific knowledge, policies, or practices.

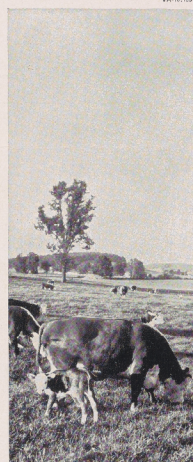
GRAZED WOODLAND

LOSES SOIL AND WATER—PRODUCES LESS TIMBER
YIELDS LITTLE FORAGE

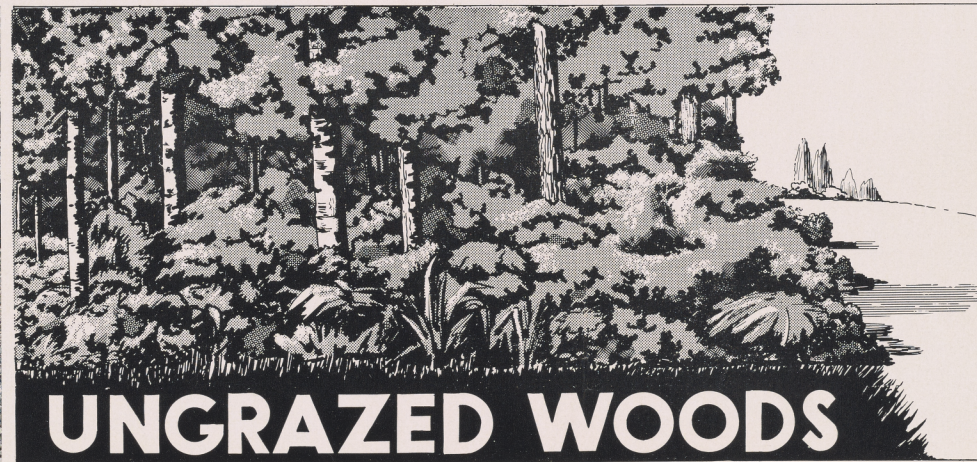
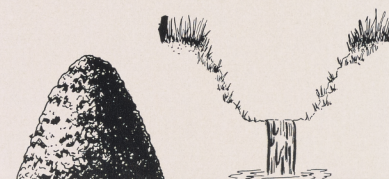


GRAZED WOODS

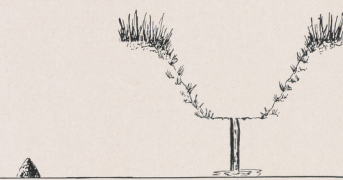
**SOIL
LOST** **WATER
LOST**



OPEN PASTURE



UNGRAZED WOODS



Experiment made from
May 26 to October 30, 1935,
on steep, comparable slopes.

Rainfall 24.18 inches.

Grazed woods,	soil loss 1,597.0 pounds,	run-off 4.41 percent
Open pasture,	soil loss 603.3 pounds,	run-off 1.62 percent
Ungrazed woods,	soil loss 17.1 pounds,	run-off 0.08 percent

UPPER MISSISSIPPI VALLEY SOIL CONSERVATION EXPERIMENT STATION, LA CROSSE, WISCONSIN